



GROUPS AND CONFERENCES

AN ARMED FORCES RECREATION CENTER RESORT
LOCATED IN GARMISCH-PARTENKIRCHEN, GERMANY

MEANINGFUL GET-TOGETHERS

With the inspiring Alps as your backdrop, along with our attentive staff, delicious food, secure facility and state of the art audio/visual technology, just imagine what you can accomplish. Hosting a conference at Edelweiss Resort, facilitates our ability to provide affordable vacation experiences for service members and their families. Those memorable vacation experiences help to keep our military resilient and focused on the mission. Let us help accomplish your mission with our flexible meeting configurations from small groups to large banquets for private and secure meetings. Our acoustic absorbing walls can also accomodate secure classified meetings, all in a relaxed and productive setting for you and your attendees.

Our conference venues include more than 17,000 square feet of function space for up to 500 attendees. Edelweiss Lodge and Resort is a memorable location for galas, unit balls, chaplain events, training and multi-national gatherings. Edelweiss Lodge and Resort is by far the most economical, and well-equipped conference venue in Europe. We recently updated our audio / visual equipment with the most modern remote-control lighting systems, BOSE conference PA sound system, and drop down ceiling projectors. Our full-service coordinators ensure every event detail is covered from beginning to end.

Complete meeting packages include:

Dedicated Conference Coordinators / Hotel Room / Meeting Space / Full Meal Plan
Audio and Visual Equipment / Coffee Breaks / Team Building Activities

We have worked with thousands of military organizations, chaplain groups, religous retreats, unit functions and all the branches of service. We have the experience and quality facilities to ensure your event is successful from start to finish. Families can also stay with you in the room at no extra cost to help balance work and quality time spent with them.

Let our conference planners customize a program that involves much more than just meetings.



Family breakfast before work

Edelweiss Lodge and Resort

A DESTINATION LIKE NO OTHER



RETREAT OFFER

PACKAGE INCLUDES

- Lodging
- Breakfast and dinner meal plan
- Meeting space with full audio/visual
- Coffee breaks during meetings

ADD ON OPTIONS

- Youth meals
- Child care
- Private catered events
- Bus transportation to/from unit
- Team building activities

Affordably priced well below per-diem.
Call our conference sales staff to get a
custom proposal for your group.



KEY STATS

AMENITIES AND SERVICES

- 254 rooms including 16 suites, 12 vacation cabins, 12 dog-friendly rooms
- Latest Force Protection Measures in place to keep attendees safe
- Unrestricted alpine views
- Heated underground parking for 180 cars
- Indoor pool with massage jets and water features for kids
- Outdoor hot tub with adult only hours in the evening
- Men's and Women's locker rooms with sauna and steam room
- Fully-equipped fitness room with free weights, circuit training and more
- 4 massage treatment rooms
- Wellness bar for drinks and snacks
- 9 hole miniature golf course
- Kids playground
- DSN capable phones
- On post AAFES PX, gas station, commissary and banking



UNIT MEETINGS



LARGE GROUPS



CONFERENCE FACILITIES

- 17,000 square feet of functional conference space
- 4,850 square foot General Patton main ballroom
- Seating for up to 500 participants
- Sound proof partitions for flexible setups
- 12 breakout salons
- Ability to host private or secured classified briefings
- Recently installed audio / visual technology
- New improved high-speed WIFI
- Business Center computers for printing
- Complete meeting packages priced below per diem
- Spouse can stay in the room (on available bed space)

TOURS AND ACTIVITIES

- Certified ski and snowboard instruction school
- Equipment rental and private ski slope
- 14 seasonal English-speaking guided tours
- Adventure activities like paragliding and white water rafting
- Electric bikes for rent
- Group tours and team-building activities
- Bus transportation available
- Supervised kids activities and facilities

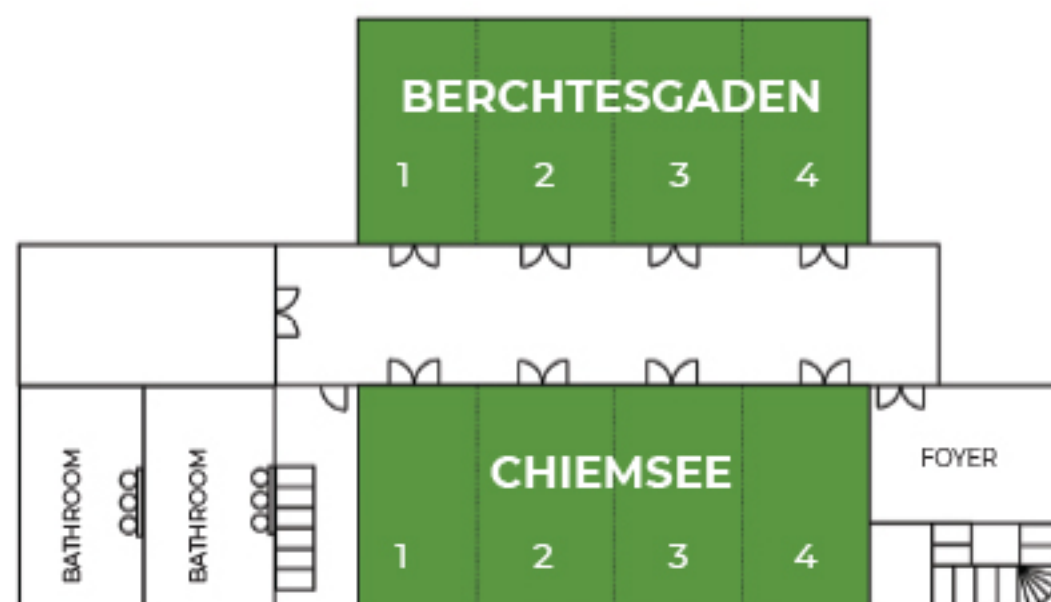
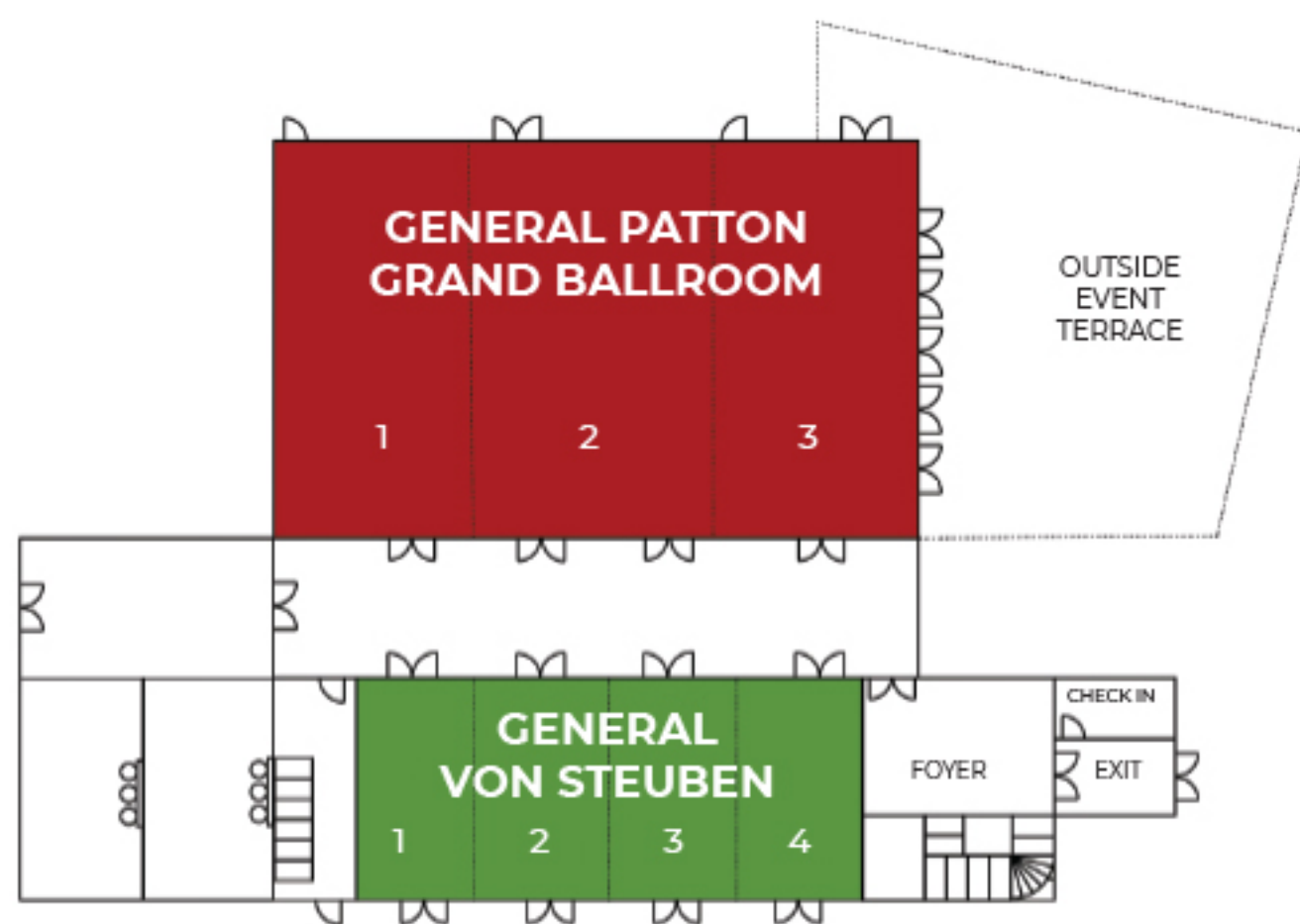


STRATEGIC PLANNING



HOLIDAY BALLS

MEETING ROOM SPECIFICATIONS



Lower Level

	DIMENSIONS W x L	SQUARE FOOTAGE	COCKTAIL RECEPTION	BANQUET ROUNDS	BANQUET SQUARES	THEATRE	CLASSROOM	U-SHAPE	BLOCK	HOLLOW SQUARE
GENERAL PATTON GRAND BALLROOM	88' x 55'	4,840	500	280	300	500	300	-	-	-
SALON I, II, III	29' x 55'	1,595	100	80	100	150	90	40	40	40
VON STEUBEN CHIEMSEE BERCHTESGADEN	68' x 30'	2,040	100	100	100	200	120	50	50	50
SALON I, II, III, IV	30' x 17'	510	25	25	20	50	30	25	25	25

Warmly decorated with rich natural wood, the floor plan and interior design take full advantage of the natural sunlight with an open, airy feel and views to the outside from most meeting areas. Complete Meeting Packages come standard with technically superior features like the remote controlled lighting system, Bose™ conference PA sound systems and drop down ceiling projectors. Exceptional tools for a single speaker or Rock-n-Roll band. The flexible meeting spaces allow for multiple floor configurations, from small groups to large banquets, with acoustic absorbing walls for private and secure meetings. Importantly, we've created an environment in alignment with applicable force protection guidelines, all in a relaxed setting for you and all of your attendees.

- Themed Events
- Entertainment
- Team Building Activities
- Spouse Programs
- Just for Kids Programs
- Guided Group Tours

...Let us custom design a meeting package for your team!



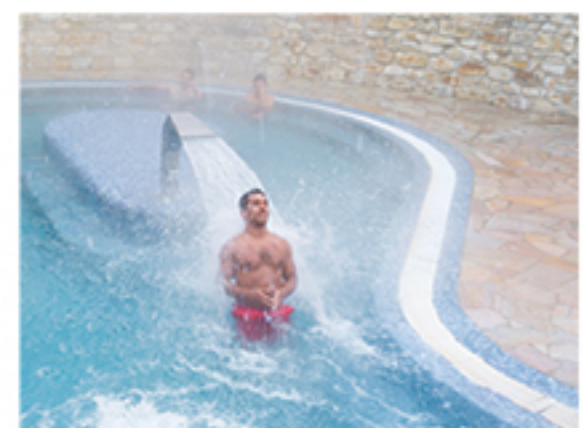
DIVERSE DINING OPTIONS

Your food and beverage choices are as diverse as the opportunities to enjoy them, from casual to full service, including regional fare, all-American dishes and cuisine from around the world. Internationally trained culinary professionals and a team of English speaking food and beverage servers offer a range of custom designed menus, themed events and services. Our newly renovated Pullman Cafe serves local roasted coffee, salads, grilled sandwiches and more. The perfect place to stop and unwind with a drink and an incredible view of the Bavarian Alps after the meetings are over.



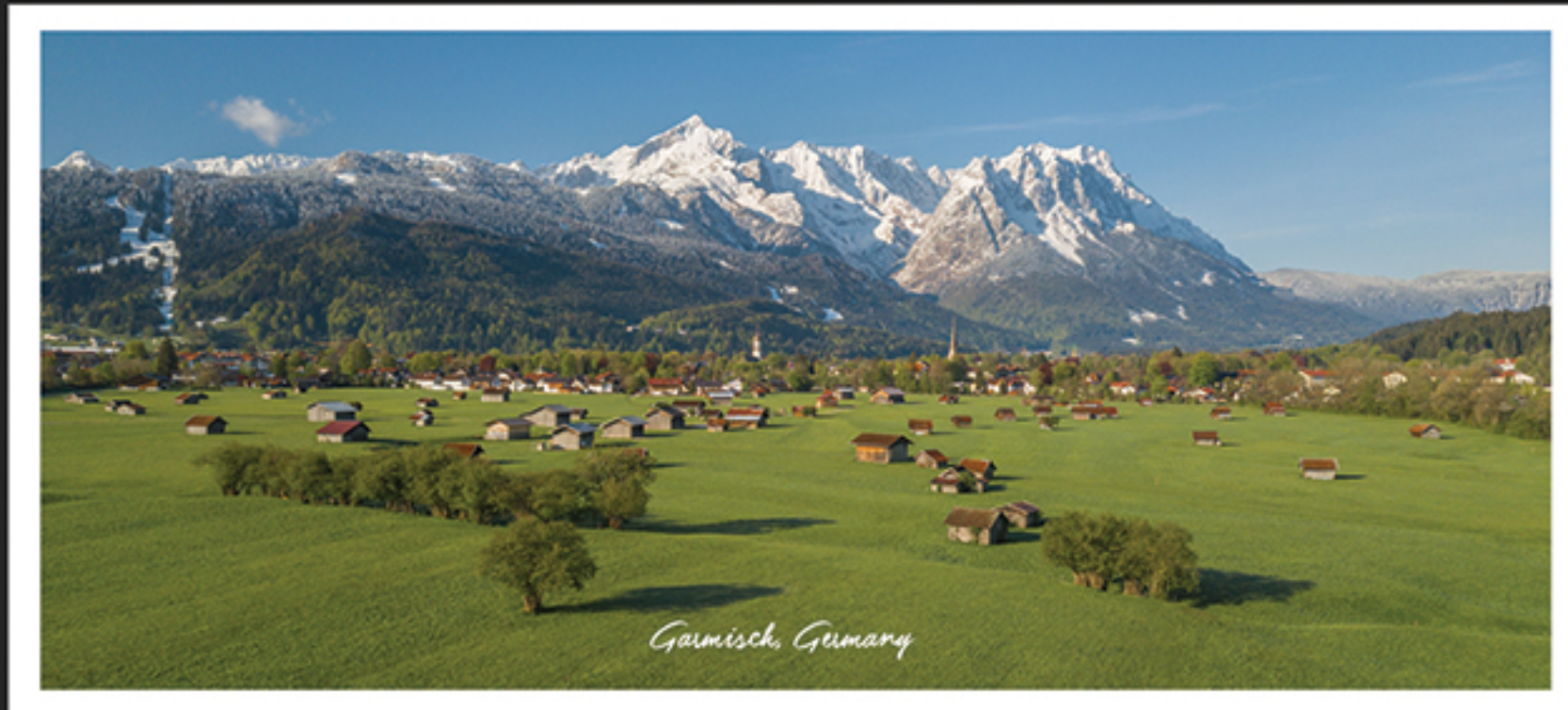
WORK HARD, PLAY HARD

The meetings are over, now it is time to relax. Bring teamwork, communication, problem solving and decision making to life. Take advantage of our extensive tour and recreation programs or plan team building exercises like white water rafting or rock climbing. Recreation is an integral part of any effective meeting and we can custom design a variety of extra activities for your group. Try out our new 9 hole miniture golf course for some friendly competition after the meetings have finished. This variety of diversions to refresh and revitalize is the perfect combination for a successful conference or meeting.



AFRC RESORTS

Hawaii / Germany / Florida / Korea

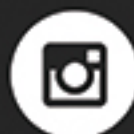


Getting Here : Edelweiss Lodge and Resort is conveniently located just 79 miles from Munich International Airport and only 63 miles from Innsbruck. Garmisch-Partenkirchen is centrally located in Europe and is easily reachable by autobahn, plane, train or bus.

Call our Group and Sales Conference Staff

DSN (314) 440 - 2850 or (+49) 08821 - 944 - 4245

sales@edelweisslodgeandresort.com



www.EdelweissLodgeandResort.com